

SPEC SHEET + MEASUREMENTS



New Era® Tri-Blend Fleece 1/4-Zip Pullover. NEA512

Product photo



A layer to live in, this pullover mixes tri-blend softness with vintage appeal.

- 7.1-ounce, 55/34/11 cotton/poly/rayon fleece
- Coverstitched seams
- Heat transfer label for tag-free comfort
- Embossed New Era neck and shoulder taping
- Exposed vislon zipper
- Matte black zipper pull embossed with New Era flag logo
- Rolled-forward shoulders
- Rib knit cuffs and hem
- Embossed silicone New Era flag logo at hem

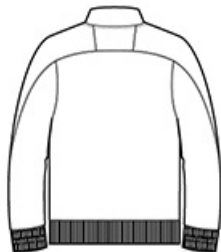
CARE INSTRUCTIONS

Machine Wash Cold With Like Colors. Do Not Use Softeners. Tumble Dry Low. Remove Promptly. only non chlorine bleach when needed. Cool Iron If Necessary. Do Not Dry Clean.

Sketches



front



back

SPEC SHEET + MEASUREMENTS



New Era® Tri-Blend Fleece 1/4-Zip Pullover. NEA512

PRODUCT MEASUREMENTS

	XS	S	M	L	XL	2XL	3XL	4XL
Body Length at Back	27	28	29	30	31	32	32 3/4	33 1/2
Chest	18 3/4	20 1/4	21 3/4	23 1/4	25 1/4	27 1/4	29 3/4	32 3/4
Sleeve Length	34 1/4	35	35 3/4	36 1/2	37 1/4	38	38 3/4	39 1/2

Body Length at Back: Measured from high point shoulder to finished hem at back.

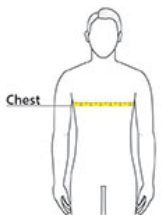
Chest: Measured across the chest one inch below armhole when laid flat.

Sleeve Length: Start at center of neck and measure down shoulder, down sleeve to hem.

SIZE CHARTS

	XS	S	M	L	XL	2XL	3XL	4XL
Chest	32-34	35-37	38-40	41-43	44-47	48-51	52-56	57-61

HOW TO MEASURE



CHEST

Measure under the arm and around the fullest part of the chest with arms down, keeping tape horizontal.

SPEC SHEET + MEASUREMENTS



New Era® Tri-Blend Fleece 1/4-Zip Pullover. NEA512

COLORS



Black Heather
PMS BLACK
C



Royal Heather
PMS 2757C



Shadow Grey
Heather
PMS COOL
GRAY 10C



True Navy
Heather
PMS 533C